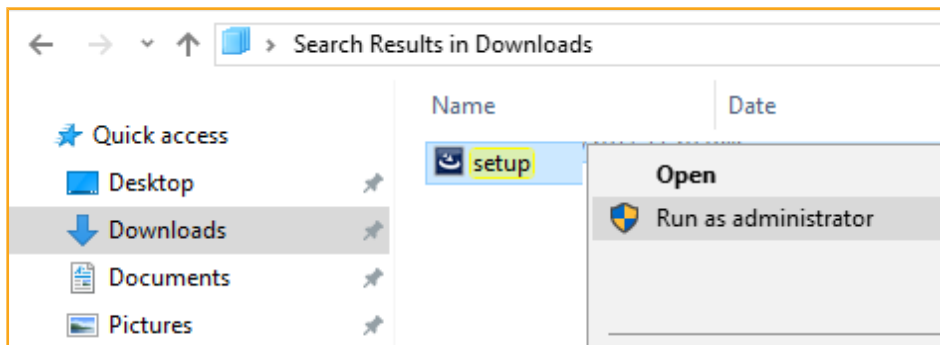


## **USB CONNECTION PROBLEM – SOFTWARE, DRIVERS AND FIRMWARE UPDATE**

1. Turn on your PC and be sure the winspiroPRO™ software is closed.
2. Download the latest winspiroPRO™ software version via this link:  
<http://www.spirometry.com/download.asp?path=MIRwinspiroPRO/setup.zip>
3. Un-zip the "setup" folder that has been downloaded, then right-click on the file "setup.exe" and select "run as Administrator" to launch the Installation Wizard.



4. Follow the Wizard to install the software

### **MILESTONE: YOUR WINSPIROPRO SOFTWARE IS NOW UP TO DATE**

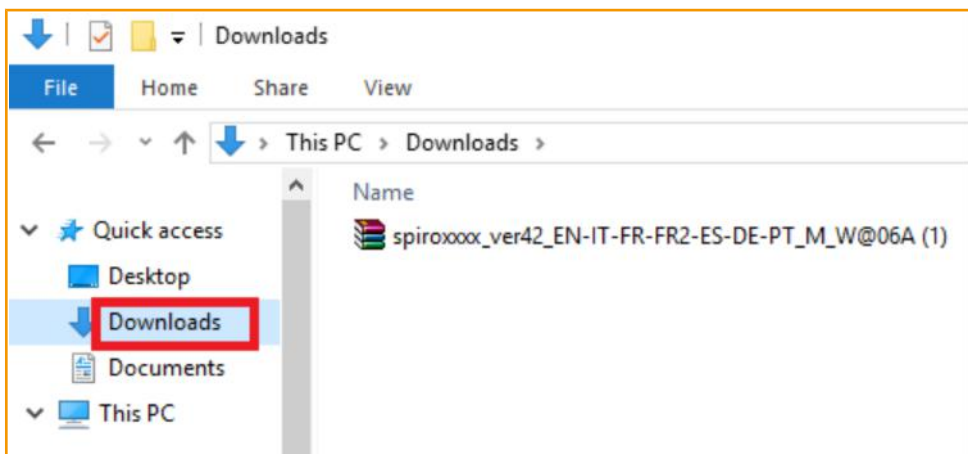
5. Keep winspiroPRO software closed and be sure your device is NOT connected to PC;
6. After the software update, drivers are automatically saved on your PC hard disk:  
C:\MIR\winspiroPRO\Drivers\MIR USB drivers\WinVista-Win7 (64bit)
7. Open this folder and right-click on the setup.exe file, then "run as administrator"

8. follow the installation wizard
9. Once the installation is done, right-click on winspiroPRO and run as administrator.
10. Try to connect device and it shall connect by now.

### **MILESTONE: YOUR USB DRIVERS ARE NOW UP TO DATE**

#### **FOLLOW THE NEXT STEPS TO UPDATE THE FIRMWARE OF YOUR SPIROMETER**

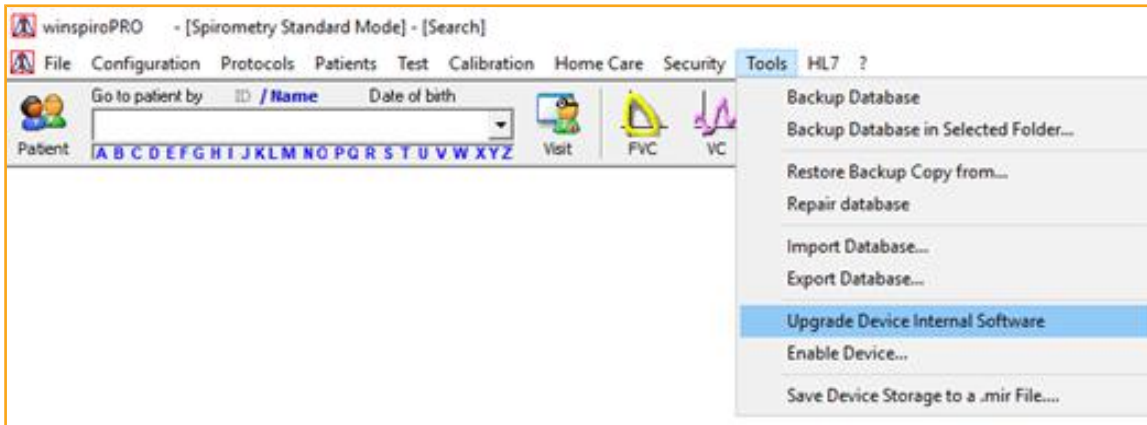
11. Download the latest firmware version for your device from MIR™ website via this link:  
<https://www.spirometry.com/ENG/download/1Firmware.asp>
12. Look for your product on the website menu and click on download.  
NOTE: in order to download the firmware, you have to login with the same email address and password you've used for the registration.
13. Once you click on download, the file should be saved on the "download" folder on your local disk.



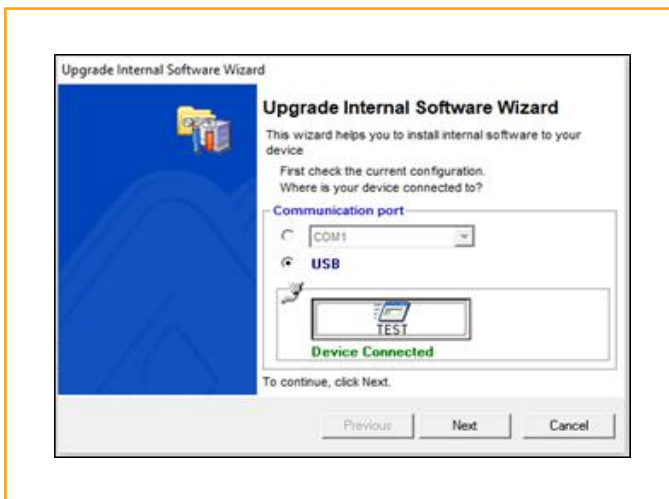
14. Unzip the file in the same folder and keep it ready for later

15. Open your winspiroPRO™ software and connect your MIR spirometer to the PC via USB cable.

16. Click on Tools → Upgrade device internal software

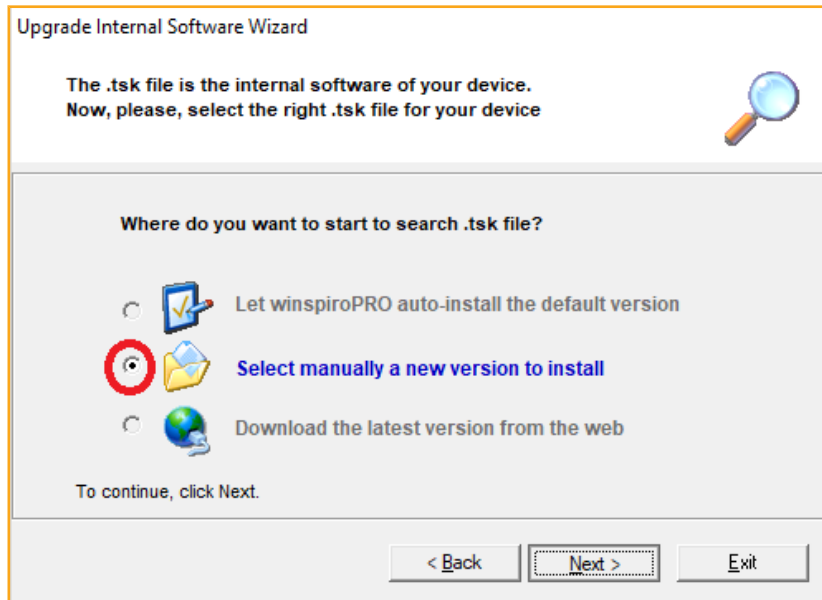


17. TEST your device is connected to your PC

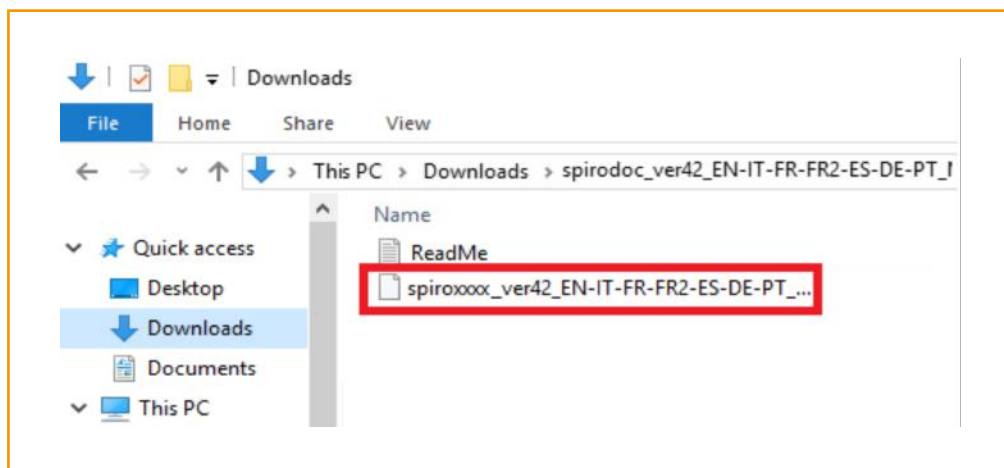


18. A green message Device Connected should appear, click NEXT

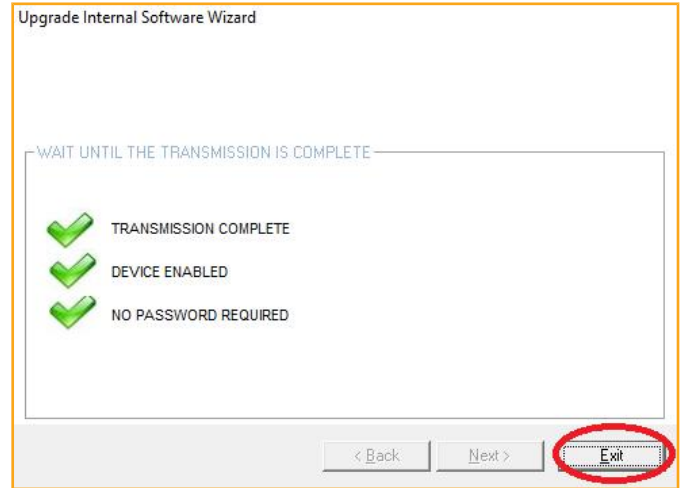
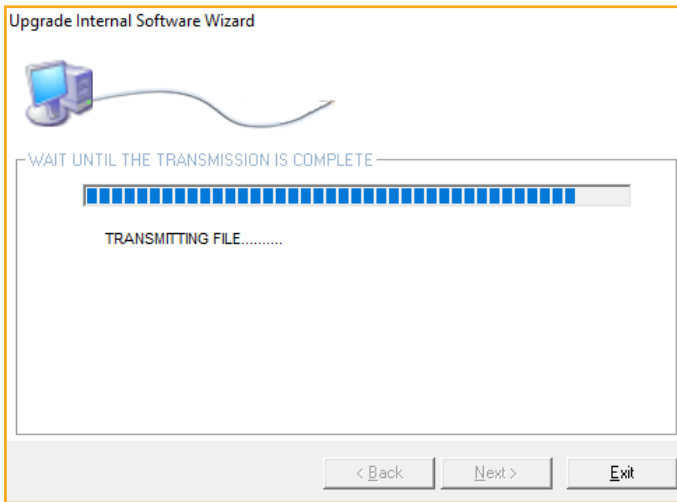
19. In the next window you can choose one out of different options.  
Second option is the best choice: "Select manually the new version to install"  
so you can install the version you've just downloaded from spirometry.com  
click NEXT



20. Go back to the file you've unzipped before which may be still in the "download" folder,  
and click on the firmware file.



21. Follow the Wizard on winspiroPRO™ and press Exit



**MILESTONE: YOUR MIR™ EQUIPMENT IS NOW UP TO DATE!**