



# Mastercam Software Licensing Guide

**January 2015**

***Mastercam***® **X<sup>9</sup>**

## **Mastercam® X9 Software Licensing Guide**

Date: January 2015

Copyright © 2015 CNC Software, Inc.— All rights reserved.

Software: Mastercam X9

### **TERMS OF USE**

Use of this document is subject to the Mastercam End User License Agreement. A copy of the Mastercam End User License Agreement is included with the Mastercam product package of which this document is part. The Mastercam End User License Agreement can also be found at:

<http://www.mastercam.com/companyinfo/legal/LicenseAgreement.aspx>

### **Be sure you have the latest information!**

Information might have been changed or added since this document was published. The latest version of this document is installed with Mastercam or can be obtained from your local Reseller. A ReadMe file (`ReadMe.pdf`)—installed with each release—includes the latest information about Mastercam features and enhancements.

# Contents

<b>1. Before You Begin .....</b>	<b>1</b>
<b>2. Working with Software Licenses .....</b>	<b>3</b>
▶ Installing on a Computer with a HASP .....	3
▶ Installing on a NetHASP Server.....	4
▶ Viewing the Software Licenses.....	7
▶ Updating the License.....	9
▶ Moving the License to a New Computer.....	10
<b>3. Installing with Mastercam Swiss.....</b>	<b>11</b>
▶ Requesting a License Update .....	11
▶ Activating the License Update .....	13
<b>4. Troubleshooting .....</b>	<b>15</b>
▶ Restarting the License.....	15
▶ Issues Connecting to NetHASP Server.....	17
▶ Opening an Unlicensed Machine.....	19



# Before You Begin

Software licensing is used by two Mastercam products - Mill-Turn and Swiss. This guide focuses on the procedures used to install Mill-Turn licenses.

Mill-Turn license files are specific to both your HASP or NetHASP number and the .MACHINE file you purchased for Mill-Turn.

Before beginning the procedures in the following chapters, please install Mastercam X9 and make sure you have received an email with your software license files (files with .WibuCmRau extension).



---

**IMPORTANT:** These steps only apply to computers that do NOT already have Mastercam Swiss installed. If Mastercam Swiss is installed, you need a special license file. Please see **Installing with Mastercam Swiss** on page 11 for more information.

If you need information on installing Swiss licenses, please refer to the *Mastercam Swiss Installation Guide*.

---

If you are running an evaluation version of Mastercam, these procedures do not apply.



## CHAPTER 2

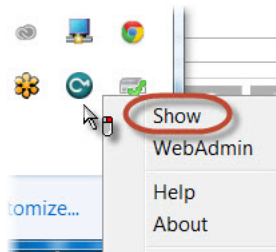
# Working with Software Licenses

This chapter includes procedures for installing, updating, and moving your software licenses for Mastercam Mill-Turn.

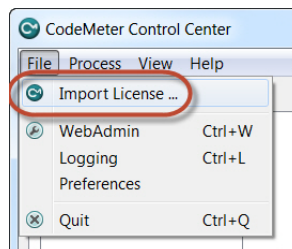
### *Installing on a Computer with a HASP*

Use this procedure if you have installed Mastercam Mill-Turn on an individual computer with a HASP. If you are using Mill-Turn in a NetHASP environment, please see **Installing on a NetHASP Server** on page 4.

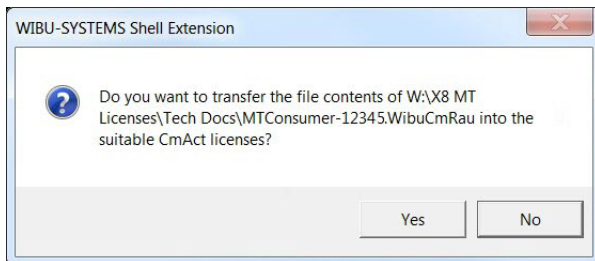
- 1 Make sure that your HASP is connected to your computer. This procedure will not work if the HASP is not present or if the HASP number does not match the number in the software license.
- 2 Save your software license file (.WibuCmRaU extension) to the hard drive.
- 3 Right-click on the CodeMeter icon in your system tray and choose **Show** to open the CodeMeter Control Center.



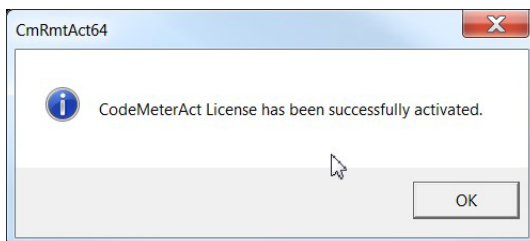
- 4 Choose **File, Import License** from the menu.



- 5 Select the `.WibuCmRaU` file from your computer and click **Import**. The following message displays.



- 6 Click **Yes**. The following message displays to indicate that your Mill-Turn license is properly installed.



## *Installing on a NetHASP Server*

Use this procedure if you run Mastercam Mill-Turn from a NetHASP network server.

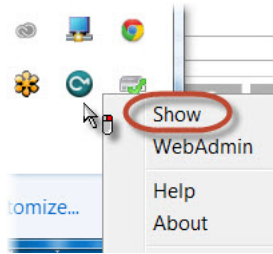
---

**NOTE:** If you have not yet configured your NetHASP server, please see the *Mastercam X9 Administrator Guide* for detailed instructions.

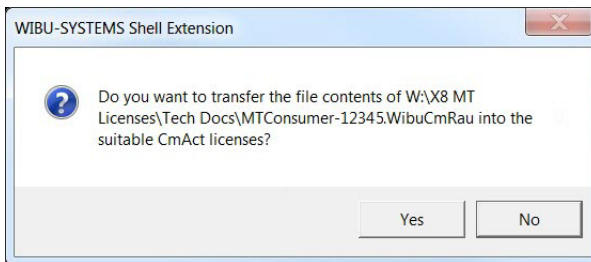
---

- 1 Move the `.WibuCmRaU` file you received to your NetHASP server.
- 2 Download the MT NetHASP utility from <http://www.mastercam.com/en-us/Support-Downloads-Drivers-and-Applets> to your NetHASP server computer. Download the 32-bit version (`mastercam-mt-nethasp-x86.exe`) or 64-bit version (`mastercam-mt-nethasp-x64.exe`) depending on the operating system of your NetHASP server.
- 3 Double-click on the `.EXE` file you downloaded.
- 4 Click through the installation program to install the necessary NetHASP files.

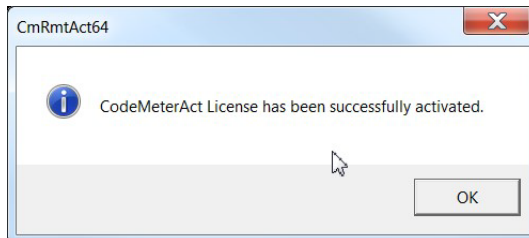
- 5 Right-click on the CodeMeter icon in the system tray and choose **Show** to open the CodeMeter Control Center on the NethASP server.



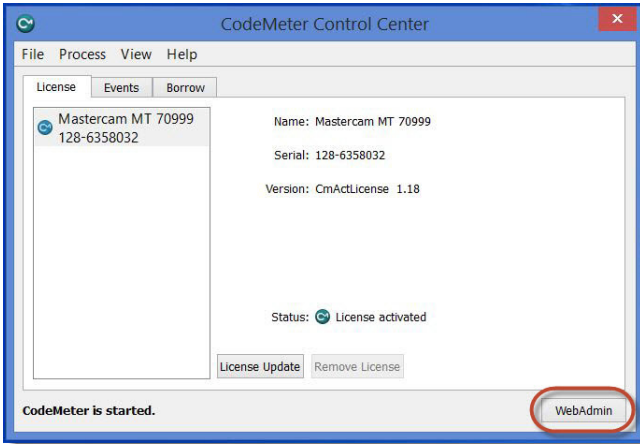
- 6 Choose **File, Import License** from the menu.
- 7 Select the `.WibuCmRau` file from the computer and click **Import**. The following message displays.



- 8 Click **Yes**. The following message displays to indicate that your Mill-Turn NethASP license is properly installed.

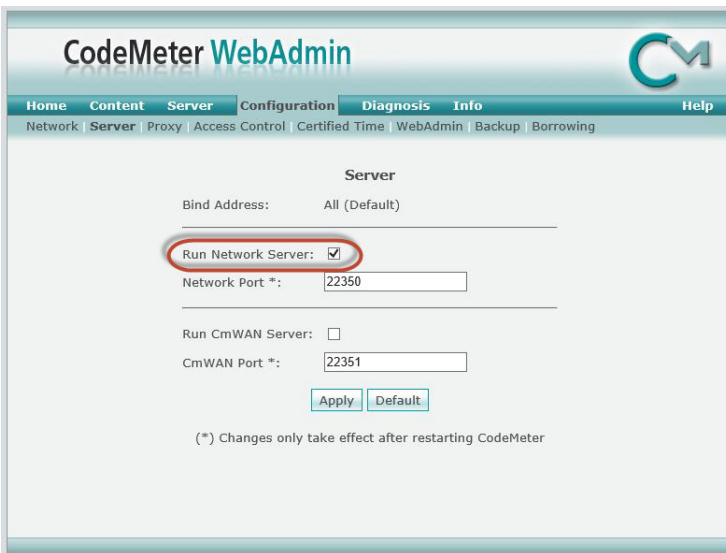


- 9 Click the **WebAdmin** button in the lower right corner of the CodeMeter Control Center dialog box.



Your software licensing information displays in your default web browser.

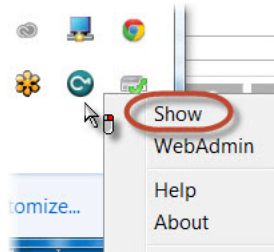
- 10 Click **Configuration, Server** and confirm that the **Run Network Server** option is selected. If this option is not selected, the client computers do not see the NetHASP licenses on your network.



## Viewing the Software Licenses

Use this procedure to see what machine licenses you have available.

- 1 Right-click on the CodeMeter icon in your system tray and choose **Show** to open the CodeMeter Control Center.

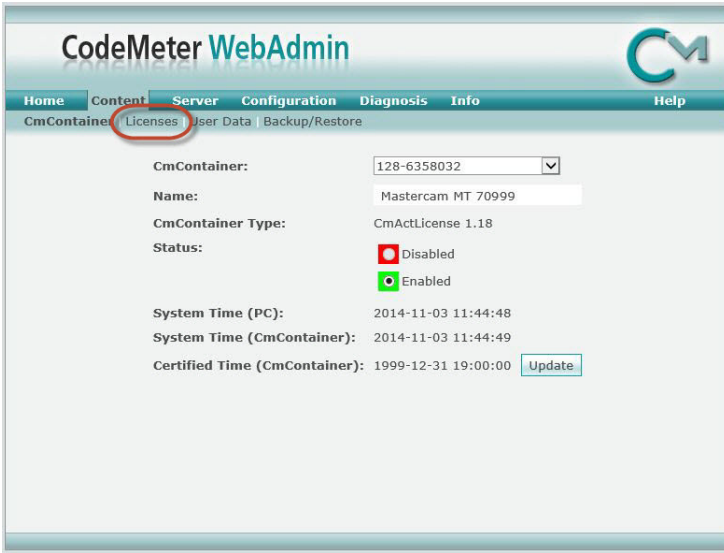


- 2 If you have more than one container installed, select the **Mastercam MT** container.
- 3 Click the **WebAdmin** button in the lower right corner.

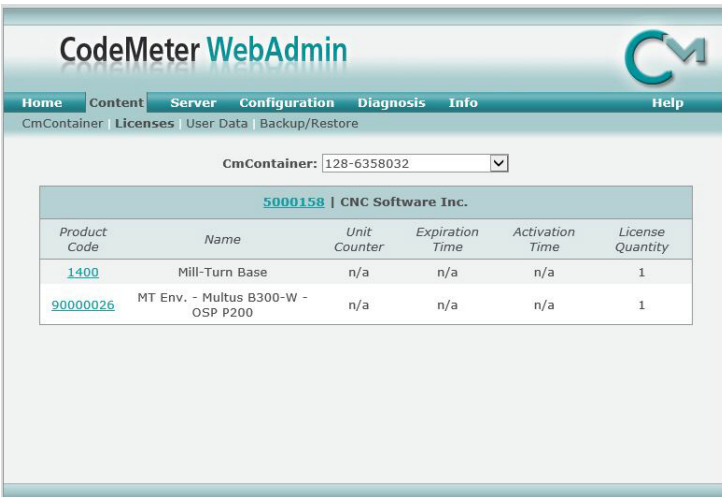


Your software licensing information displays in your default web browser.

4 Click **Content**, **Licenses**.



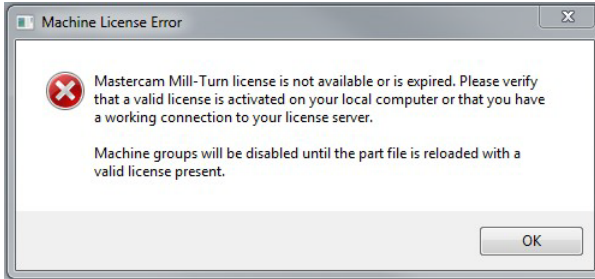
The Mill-Turn Base license and your individual machine licenses display in your browser.



## Updating the License

You must update your license if you need to add a machine or if your Mill-Turn license times out.

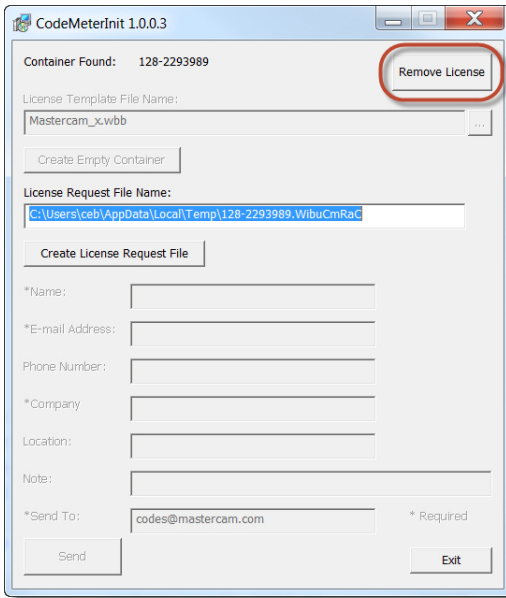
You may see the following error message:



Use the following procedure to update your Mill-Turn license. Before you begin, make sure you have received an updated license file (.WibuCmRaU file).

- 1 Download the `CodeMeter Utility` and `ReadMe.ZIP` from the Drivers and Utilities download page on the Mastercam.com website.
- 2 Unzip the file and double-click the `CodeMeterInit.EXE` file.

- 3 Click **Remove License** at the top of the CodeMeterInit dialog box.



- 4 Click **OK** on both of the warning messages to remove your license.
- 5 Use the previous installation procedures in this chapter to install your updated license file (.WibuCmRaU file).

### *Moving the License to a New Computer*

If you need to move your license to a new computer, please see the previous installation procedures in this chapter to reinstall your license using your original software license file.

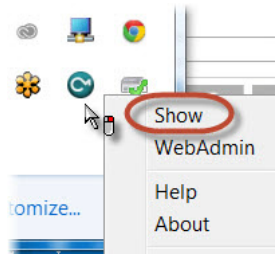
# CHAPTER 3

## Installing with Mastercam Swiss

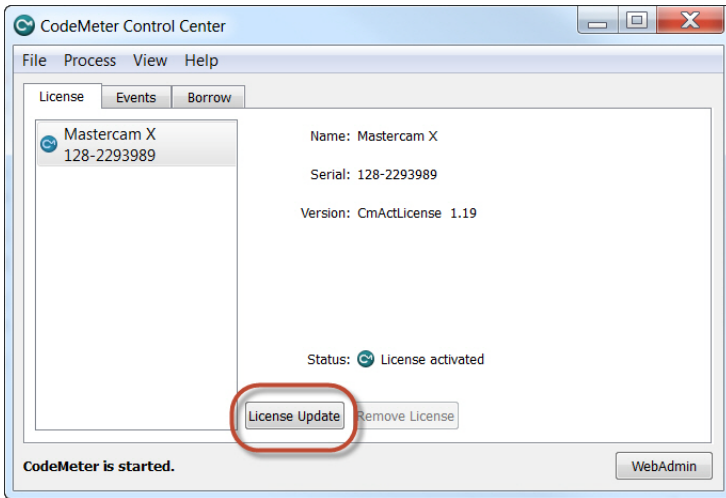
If Mastercam Swiss is installed on your computer, you must complete additional steps to set up your software licensing for Mill-Turn, including contacting your Mastercam reseller to get a special Swiss license that does not conflict with Mill-Turn.

### Requesting a License Update

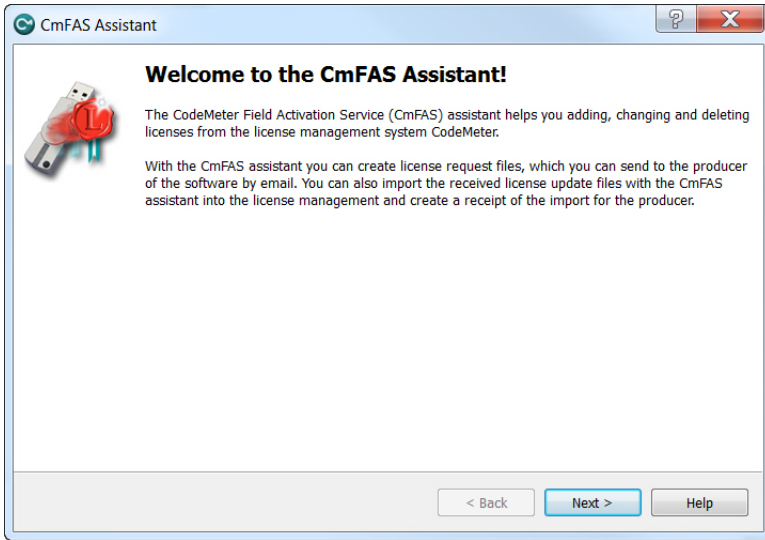
- 1 Right-click on the CodeMeter icon in your system tray and choose **Show** to open the CodeMeter Control Center.



- 2 Click **License Update**.

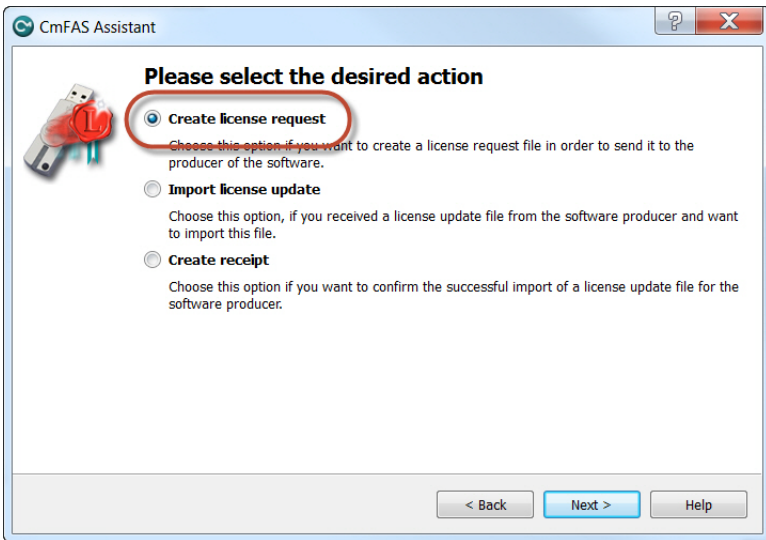


The CmFAS Assistant dialog box displays.

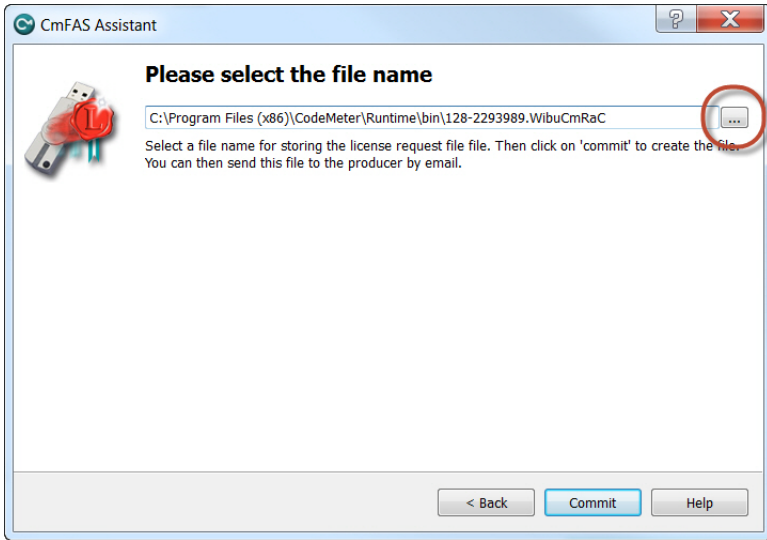


3 Click **Next**.

4 Select **Create license request** and click **Next**.



- 5 Click the **Browse** button to select a destination folder for the license request file.




---

**IMPORTANT:** You can change the file name, but do not change the file extension (.WibuCmRaC).

---

- 6 Click **Commit** to create the license request file.
- 7 Click **Finish** to exit the CmFAS Assistant.
- 8 Email the resulting file to your Mastercam reseller. In the email, you should include your company information, the machine environments you purchased for both Mill-Turn and Swiss, and your HASP or NetHASP number.

### *Activating the License Update*

Use the following procedure after you receive an update file (\*.WiBuCmRaU).



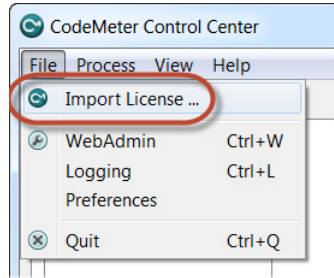

---

**IMPORTANT:** Do not remove your original \*.WiBuCmRaU file that you received for your Swiss licensing.

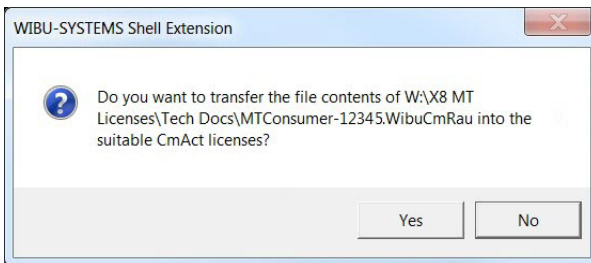
---

- 1 Save the license update file that you received to a location on your computer.

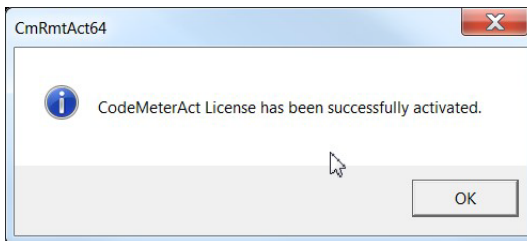
- 2 Re-open the CodeMeter Control Center.
- 3 Choose **File, Import License** from the menu.



- 4 Select the .WibuCmRaU file from your computer and click **Import**. The following message displays.



- 5 Click **Yes**. The following message displays to indicate that your Mill-Turn license has been added to your Swiss license.



You should now be able to use your Mastercam Swiss product and your Mastercam Mill-Turn product.

# CHAPTER 4

## Troubleshooting

This chapter includes procedures and suggestions for handling issues with software licensing.

### *Restarting the License*

Mill-Turn licenses require a constant connection to your HASP or NetHASP to work properly, so any interruption can disable the software license. These circumstances could include:

- Removing the HASP before shutting down or restarting your Mastercam system.
- Disconnecting from the network if you are running a NetHASP.
- Having your computer go into “sleep” mode.
- Having the HASP on your computer not match the HASP in your license (Error 263).

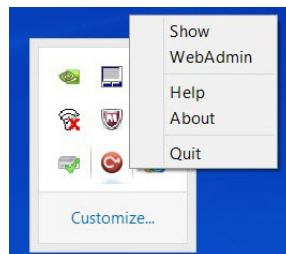
Use the following procedure to re-enable your software license.

- 1 Right-click on the CodeMeter icon in your system tray and choose **Show** to open the CodeMeter Control Center.

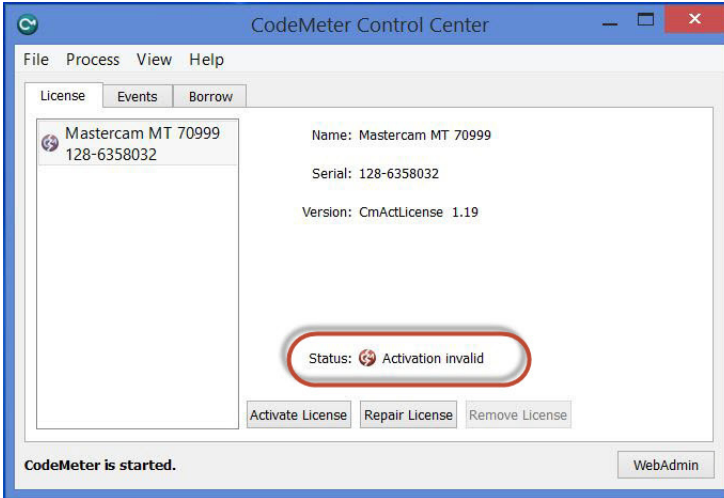
---

**NOTE:** The CodeMeter icon changes to red if the license is disabled.

---

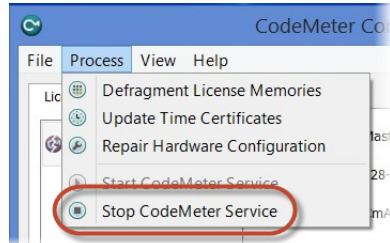


The CodeMeter Control Center displays the license as a red icon with the status **Activation invalid**.

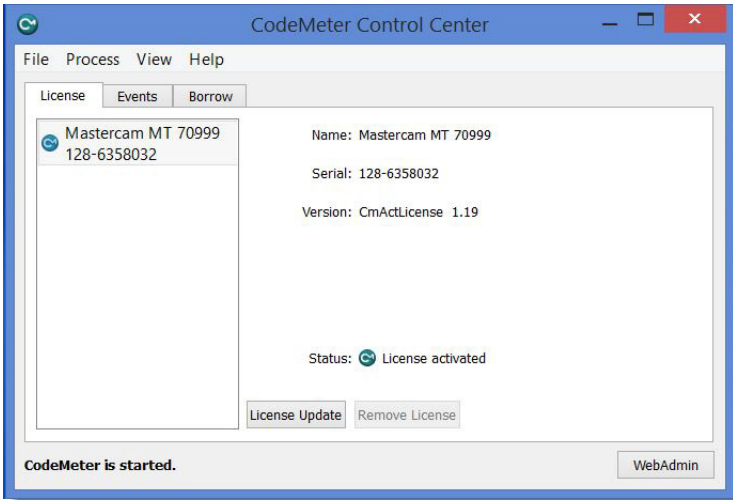


- 2 Choose **Process, Stop CodeMeter Service** from the menu.

Wait approximately 20 seconds for the service to stop.



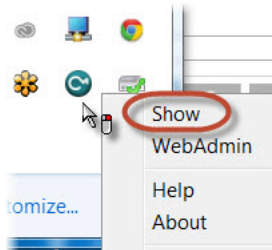
- 3 Choose **Process, Start CodeMeter Service**. The dialog box updates and displays the status as **License activated**.



## *Issues Connecting to NetHASP Server*

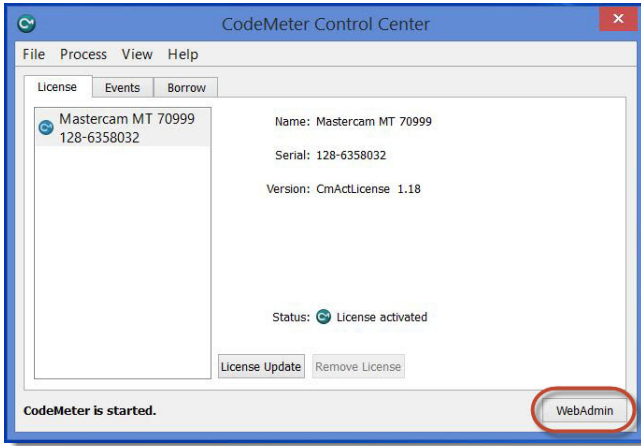
If you are having problems connecting a computer to the NetHASP licenses for your company, use the following procedure.

- 1 On the client-side computer, right-click on the CodeMeter icon in the system tray and choose **Show** to open the CodeMeter Control Center.



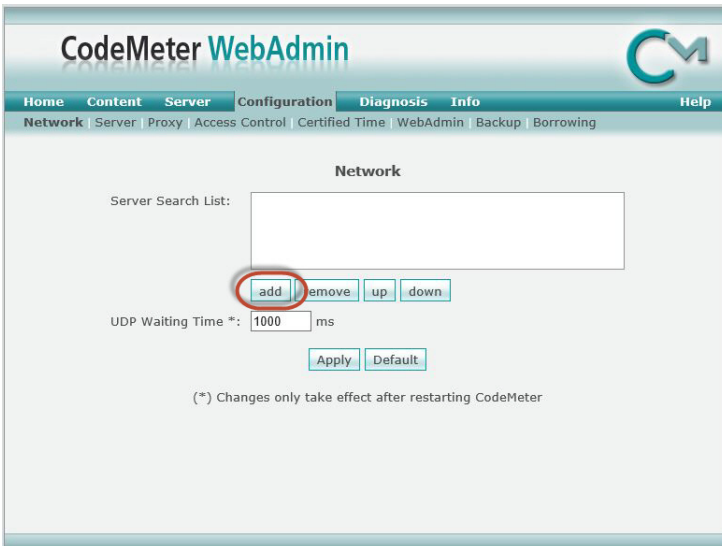
- 2 If you have more than one container installed, select the **Mastercam MT** container.

- 3 Click the **WebAdmin** button in the lower right corner.



Your CodeMeter information displays in your default web browser.

- 4 Click **Configuration, Network**.
- 5 Click **add** under the Server Search List to specify where the client computer looks for the license.

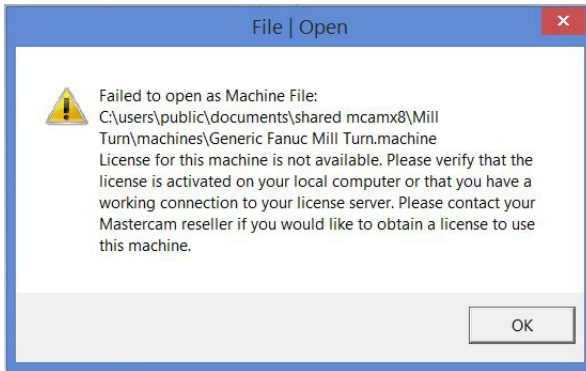


- 6 Enter an IP address or name for the NetHASP server and click **OK**.

The client computer now knows exactly where to look on the network for the Mill-Turn license. You can add multiple locations to this list and the software licensing searches for them according to the list order until it obtains a license.

### *Opening an Unlicensed Machine*

If you try to load a .MACHINE file that you are not licensed for, or try to open a .MCX file that uses an unlicensed .MACHINE file, Mastercam displays the following message:



You can open the part file in Mastercam, but cannot post, generate an IOF file, or use the Sync Manager for this part until you receive an updated license file that includes this machine.

